



TORNADO INDUSTRIES, LLC
3101 WICHITA COURT
FORT WORTH, TX 76140
PHONE 800-VACUUMS
FAX 817-551-0719
WWW.TORNADOVAC.COM

Parts Manual
For Commercial Use Only



BR 460 ESCALATOR CLEANER
MODEL NO: 96180



Long -Term Buyer Protection Limited Warranty

Tornado Industries, LLC. warrants to the end user/ customer that the Tornado product(s) will be free from defects in material and workmanship for the duration(s) described below. This limited warranty DOES NOT cover machines and/or components subject to normal wear and tear, damage that occurs in shipping, failures resulting from modification, accident, unsuitable operating environment, misuse, abuse, **neglect, or improper maintenance**. For full details, contact your Authorized Tornado Distributor, Service Center, or the Tornado Technical Service Department. Tornado sales and service representatives are not authorized to waive or alter the terms of this warranty, or to increase the obligations of Tornado under the warranty.

10 Years*

Plastic water tanks and Rotationally-molded bodies

2 Years*

Parts on all Tornado cleaning equipment

1 Year*

Labor on all Tornado cleaning equipment

1 Year*

Warranty on batteries, one year prorated

All battery warranties are handled directly by the battery manufacturer, on a one year prorated basis

Terms subject to change without notice

1. All Windshear™ Blowers, Storm, TV2SS, Side and Dowlndraft, Insulation Blowers, CV 30, CV 38, CK14/1 PRO, CK 14/2 PRO, SWM 31/9, CK LW13/1, CK LW 13/1 ROAM, CV 38/48 Dual, PV6, PV10, PV6 ROAM, Wall Mount Vacuum and all chargers are warranted for 1 (one) year for both parts and labor.
2. All non-wear item parts purchased after warranty expiration are warranted for 90 days.
3. Warranty starts from either: The date of sale to the consumer, or 6 months after the dealer purchased the unit from Tornado (at Tornado's discretion), whichever comes first.
4. The EB 30 is warranted for a period of 90 days for both parts and labor.
5. Propane-powered equipment engines are limited to the engine manufacturer's warranty.
6. Ride-on Scrubbers are warranted for 24 months parts, and 6 months labor, or 1,000 hours, whichever occurs first.

Note: Tornado, The Latest Dirt, Floorkeeper, Carpet-keeper, Carpetrinser, Carpetrinser/Dryer, Headmaster, Taskforce, PAC-VAC, T-Lite, Glazer, Windshear, Max-Vac and Trot-Mop are trademarks of Tornado Industries

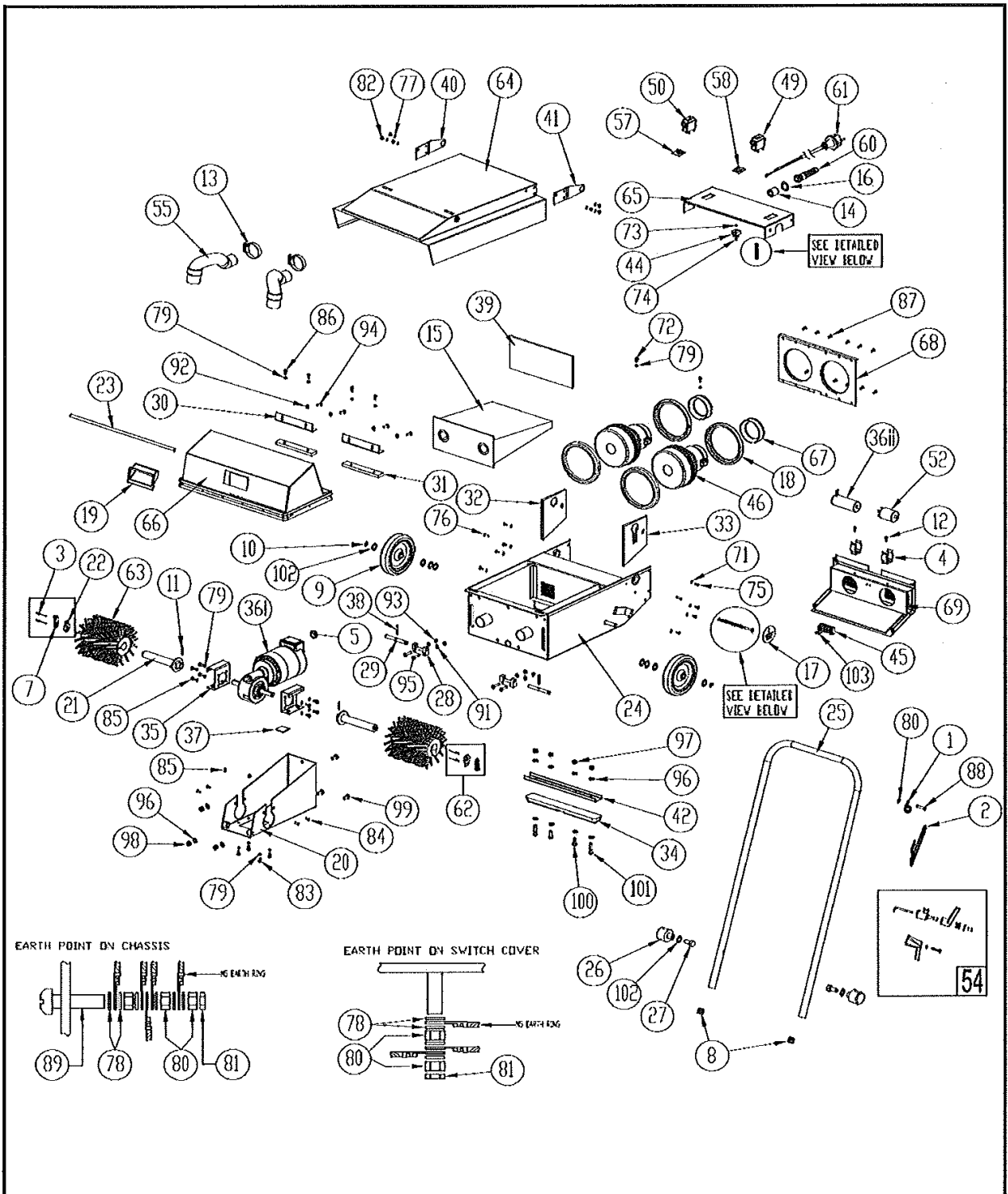
Website: www.tornadovac.com

Phone 1-800-VACUUMS

Fax 817-551-0719

Address 3101 Wichita Court

Fort Worth, TX 76140



No.	Part No.	Qty	Description
1	02-3151-0000	1	P Clip
2	02-3152-0000	1	Cable Strain Relief Bracket
3	02-4092-0000	4	Pop Rivet
4	02-4103-0000	2	Capacitor Bracket
5	02-4129-0000	1	Gromet
6	02-4149-0000	10	White Cable Tie (Not Shown)
7	02-4162-0000	2	Slide Latch
8	02-4163-0000	2	Insert
9	02-4164-0000	2	Wheel
10	02-4165-0000	2	External Circlip
11	02-4287-0000	2	Roll Pin
12	02-4323-0000	2	Screw 10 x 1/2 Self Tap
13	02-4369-0000	2	Jubilee Clip 2A (35-50mm)
14	02-4371-0000	1	Ferrite Sleeve
15	02-4372-0000	1	Paper Bag (self sealing) (10pk)
16	02-4550-0000	1	Nylon Washer
17	03-6185-0000	1	Earth Point Label
18	03-7065-0000	4	Mounting Ring
19	03-7200-0000	1	Cowl Handle
20	03-7231-0000	1	Brush Motor Chasis
21	03-7232-0000	2	Brush Spindle
22	03-7233-0000	2	Brush Retaining Plate
23	03-7235-0000	1	Brush Cowl Shaft
24	03-7236-0000	1	Chasis
25	03-7238-0000	1	Handle
26	03-7239-0000	2	Pivot Block
27	03-7240-0000	2	Handle Bolt
28	03-7241-0000	2	Bolt Block
29	03-7242-0000	2	Bolt Pin
30	03-7245-0000	2	Cowl Glide Bracket
31	03-7246-0000	2	Cowl Glide Bar
32	03-7256-0000	1	Insulation Gasket (Right)
33	03-7257-0000	1	Insulation Gasket (Left)
34	03-7258-0000	1	Rest Bar Rubber
35	03-7259-0000	2	Motor Mounting Bracket
36	03-7261-0000	1	Motor 120V
37	03-7267-0000	1	Motor Support Pad
38	03-7642-0000	2	Handle Bolt
39	03-7644-0000	1	Vacuum Motor Filter
40	03-7645-0000-R	1	Lid Hinge (Right)
41	03-7645-0000-L	1	Lid Hinge (Left)
42	03-7649-0024	1	Rest Bar
44	04-3146-0412	1	12 Way Terminal Block
45	04-3146-0412	1	12 Way Terminal Block
46	04-3256-0000	2	Vacuum Motor
49	04-3605-0000	1	Vacuum Switch
50	04-3607-0000	1	Brush Switch

No.	Part No.	Qty	Description
51	04-3859-0000	1	Complete Wiring Kit (Not Shown)
52	04-3869-0000	1	EMC Filter
54	10-0108-0000	1	Cable Hook Kit
55	33626	2	Hose 1-1/2" I.D. With Cuff
60	02-4186-0000	1	Cable Gland
61	04-3246-0000	1	Cable With Plug
62	05-3913-0000	4	Brush Retaining Clip
63	05-4096-0000	1	Brush Set (Left and Right)
64	05-4590-0000	1	Vacuum Cover With Seal
65	05-4591-0000	1	Switch Cover Assembly
66	05-4592-0000	1	Brush Cowl Assembly
67	05-4593-0000	2	Vacuum Motor Gakset (Top) with Sealing Ring
68	05-4594-0000	1	Baffel Plate with Foam Gaskets
69	05-4595-0000	1	Rear Panel with Gasket
70	33851	1	Main Chasis Assembly
71	00-0400-0503	8	Flat Washer SS
72	03261	2	Screw #10-32 x 3/8
73	00-0300-0511	1	Spring Washer
74	00-0300-0721	1	Nyloc Nut
75	00-0410-0011	8	Screw M4 x 10
76	00-0416-0051	2	Screw M4 x 16
77	00-0500-0501	6	Washer
78	00-0500-0507	10	Brass Washer
79	00-0500-0521	18	Washer
80	00-0500-0701	6	Nut
81	00-0500-0711	2	LockNut
82	00-0506-0011	6	Bolt M5 x 6
83	00-0510-0011	4	Screw M5 x 10
84	00-0510-0031	4	Screw, Countersunk
85	00-0510-0091	8	Screw M5 x 10
86	00-0510-0111	4	Bolt M5 x 10
87	00-0512-0031	12	Screw M5 x 12
88	00-0520-0013	1	Screw M5 x 20
89	00-0530-0011	1	Screw M5 x 30
90	00-0600-0171	2	Screw M6 x 8
91	00-0600-0501	4	Washer
92	00-0600-0503	4	Washer
93	00-0600-0721	4	Nyloc Nut
94	00-0616-0111	4	Bolt M6 x 16
95	00-0625-0111	4	Bolt M6 x 25
96	00-0800-0501	11	Washer
97	00-800-0701	2	Nut
98	00-0800-0721	5	Nyloc Nut
99	00-0816-0111	3	Bolt M8 x 16
100	00-0820-0111	2	Bolt M8 x 20
101	00-0835-0181	2	Screw M8 x 35
102	00-1200-0503	10	Washer
103	X9531	2	Screw #4 x 3/4 Self Tapper